

# **HUMAN EVOLUTION?**

**Richard Overman M.S.**

**Creation Education Resources, Inc**

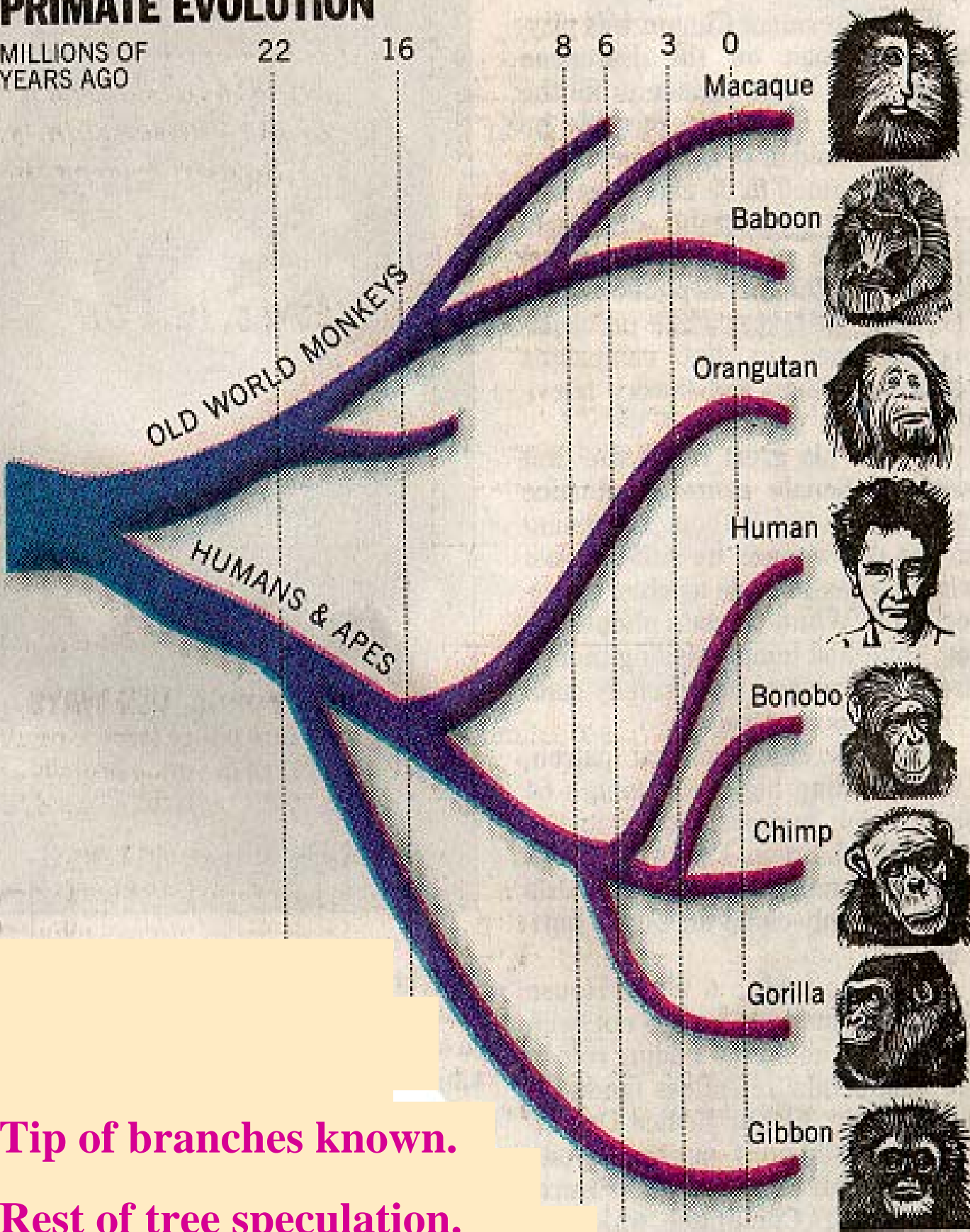
**[www.creationeducation.org](http://www.creationeducation.org)**

**[Cer@creationeducation.org](mailto:Cer@creationeducation.org)**

# PRIMATE EVOLUTION

MILLIONS OF YEARS AGO

22 16 8 6 3 0



Tip of branches known.  
Rest of tree speculation.



Cro-Magnon

# Homo-Sapiens



# Homo-erectus



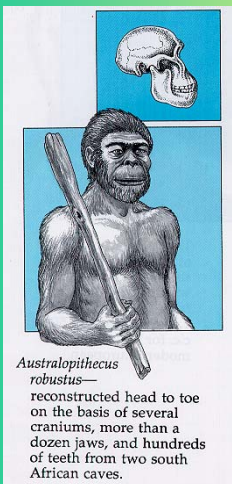
# Australopithecus



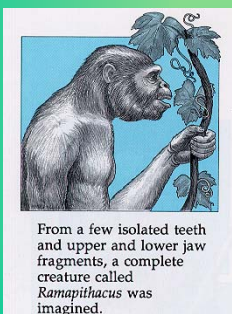
# Ramapithecus



Nebraska Man—created from the discovery of a single tooth.

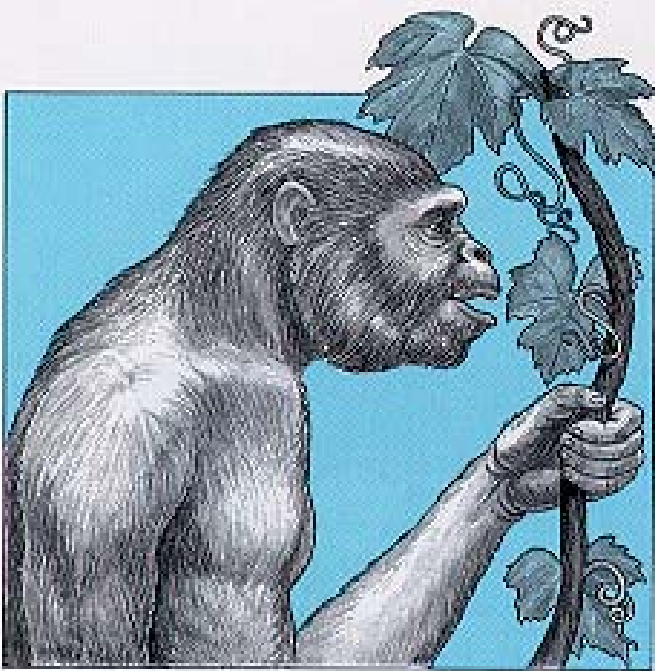


*Australopithecus robustus*—reconstructed head to toe on the basis of several craniums, more than a dozen jaws, and hundreds of teeth from two south African caves.



From a few isolated teeth and upper and lower jaw fragments, a complete creature called *Ramapithecus* was imagined.

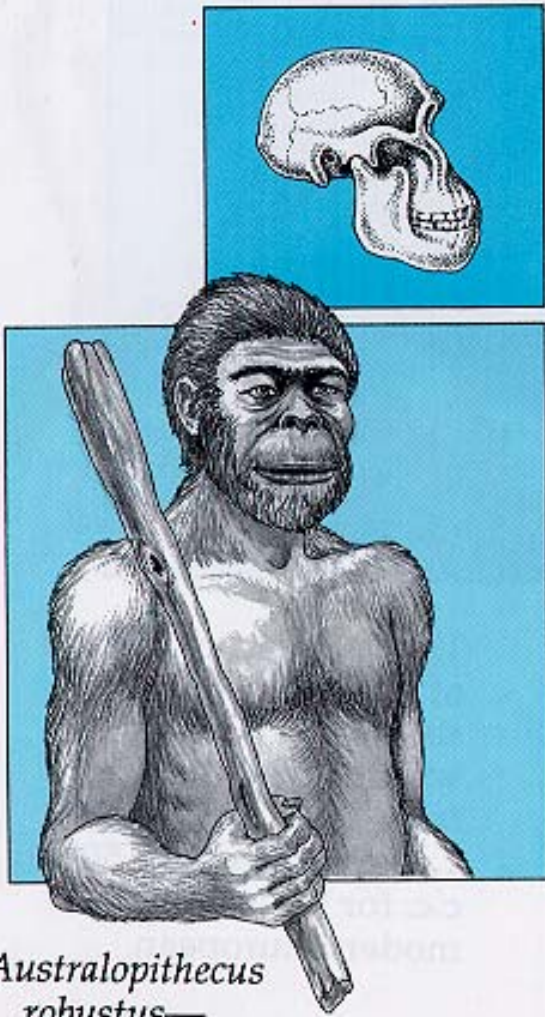
# Ramapithecus



From a few isolated teeth and upper and lower jaw fragments, a complete creature called *Ramapithecus* was imagined.

- Placed on human tree from a few teeth and jaw fragments.
- Later determined to probably be an orangutan.

# Australopithecus

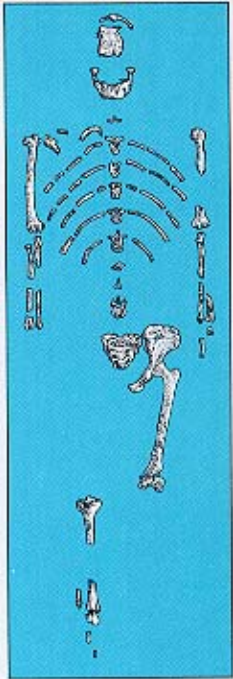
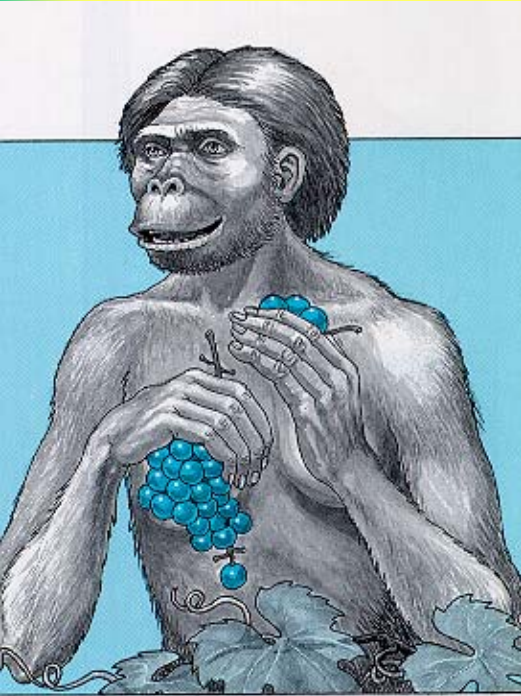


*Australopithecus robustus*—reconstructed head to toe on the basis of several craniums, more than a dozen jaws, and hundreds of teeth from two south African caves.

- Many variants:
  - afarensis
  - africanus
  - boisei
  - robustus
- Size and shape of teeth and palate thought to be more similar to man.
- More detailed studies show to be either ape or a unique creature, but not related to man.
- Most famous is “Lucy”



# Lucy



Lucy—when they required a knee joint to prove that Lucy walked upright, they used one found more than 200 feet lower in the strata and more than two miles away.

- **Fossil skeleton about 40% complete**
- **Believed to have walked upright based on knee joint found two miles away**
- **Skeleton closely matches a rain forest chimpanzee**
- **No more human than other Australopithecus.**

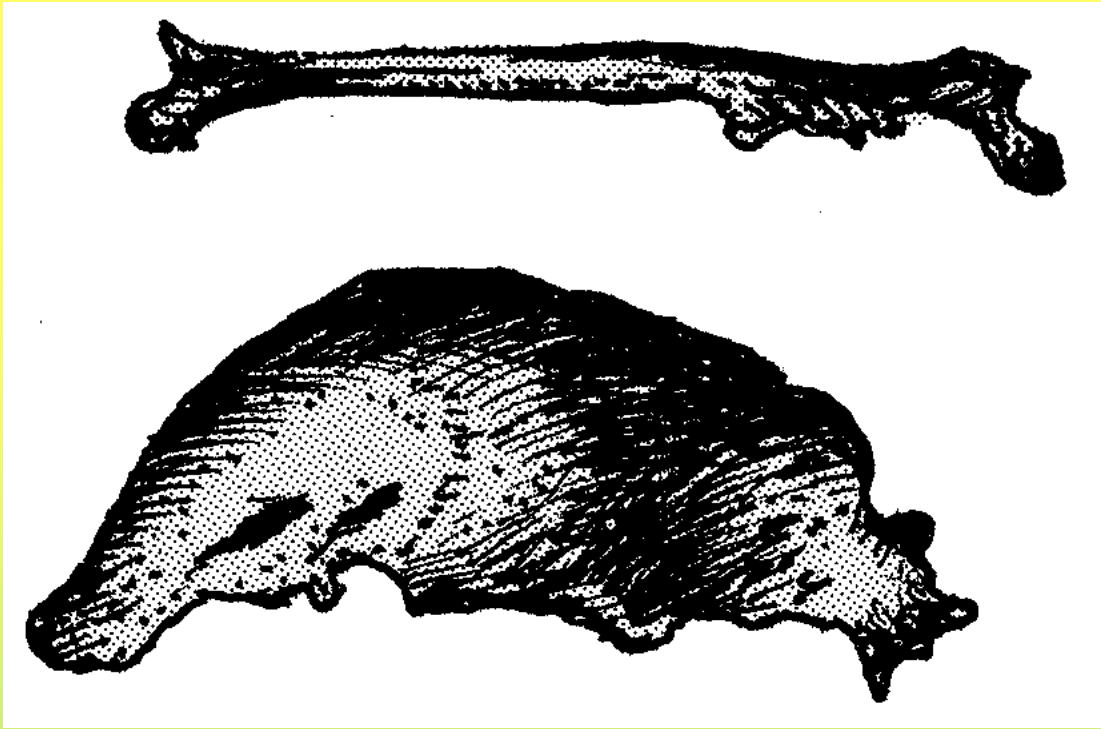
# Homo-erectus



Nebraska Man—created from the discovery of a single tooth.

- Includes:
  - Java-man
  - Peking-man
  - Piltdown-man
  - Nebraska-man
- All shown to be deliberate lies or wrong interpretation of data

# Java-man



- Based on skull cap and leg bone found 50 feet apart.
- Skull cap ape-like, leg bone essentially human
- Dubois disclosed 30 years later that he also found human skulls under these fragments

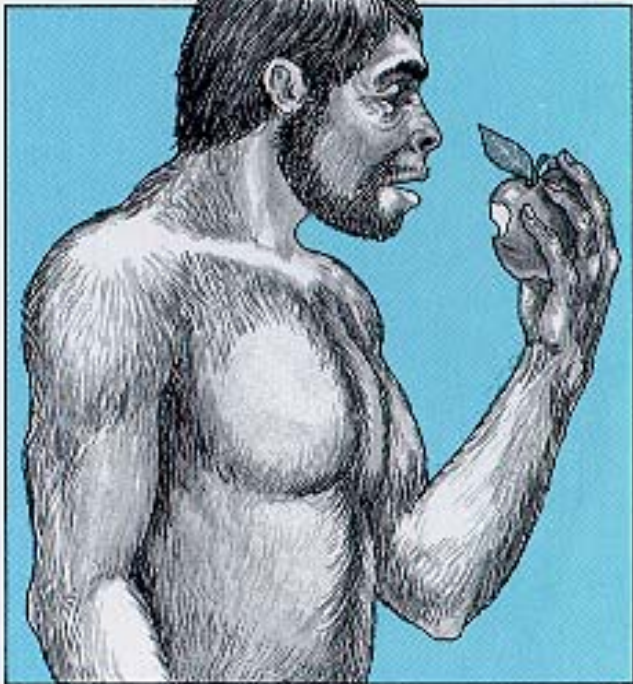


# Peking-man



- **Picture (as shown in a London Museum) based on 3 teeth and dozens of pieces of broken up skulls.**
- **All evidence, except 2 teeth, lost during WW II.**
- **Scientists concluded the fragments were decidedly monkey-like.**

# Piltdown-man



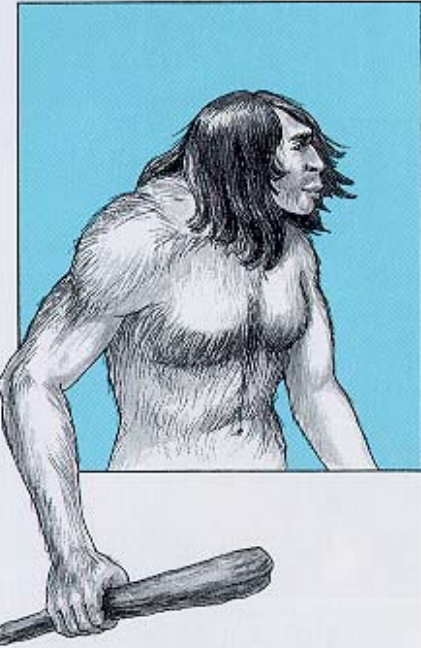
Piltdown Man—proven  
in 1950 to be a hoax.

- Based on fragments of a jaw bone and pieces of skull.
- Teeth filed to make them appear more human.
- Jaw and skull stained to give appearance of age.
- Hoax not discovered for 50 years.

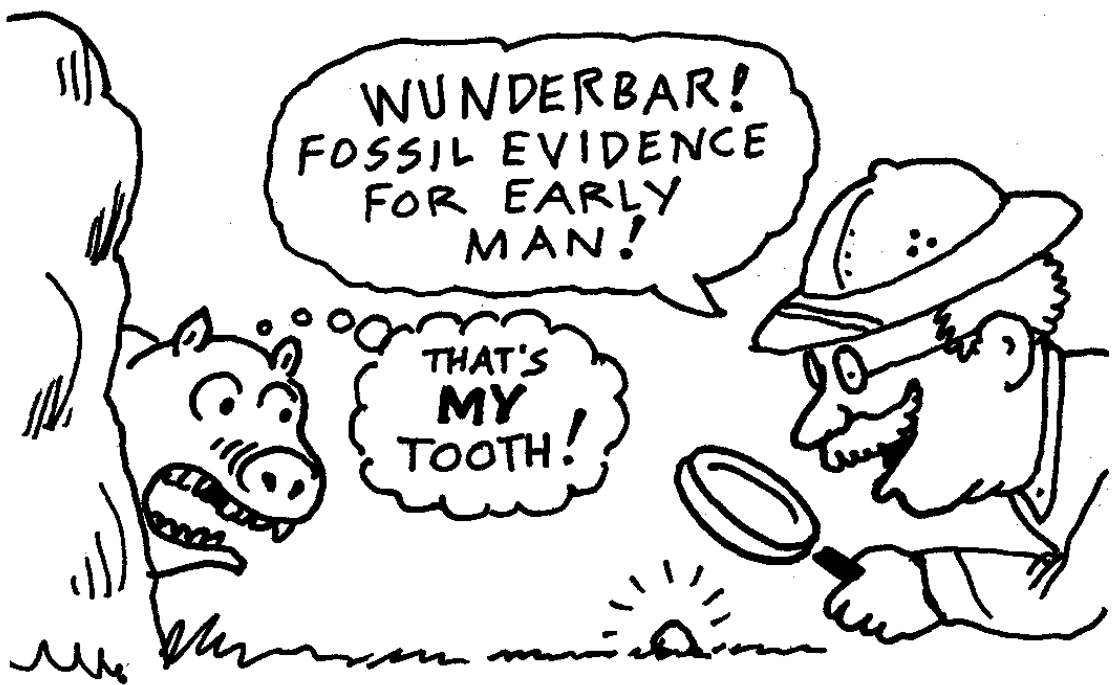
# Nebraska-man



- Based on a single tooth.
- Hero of the Scopes Monkey Trial.
- Tooth later found with more skeleton and found to be extinct pig



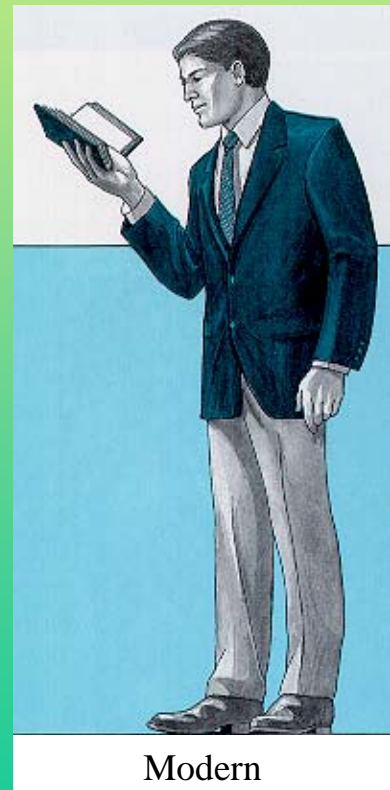
Nebraska Man—created from the discovery of a single tooth.



# Homo-sapien



- Includes
  - Neanderthal man
  - Cro-Magnon man
  - Modern man
- All are fully human





# *NEANDERTHAL MAN*

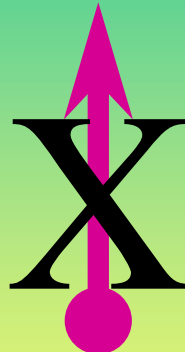
- “What Happened to the Craniofacial Structure of Humans who Live Past 100 Years? Neanderthal Similarities.”
- Paper by Dr. John Cuzzo.
- Studied the changes to the face and skull with aging.
- A fascinating study that puts a “new face” on the Neanderthal fossils.





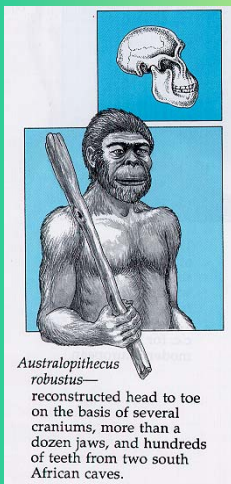
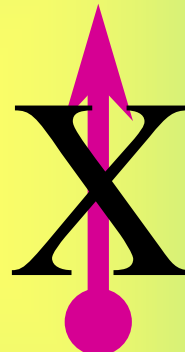
# Man

## Homo-sapiens



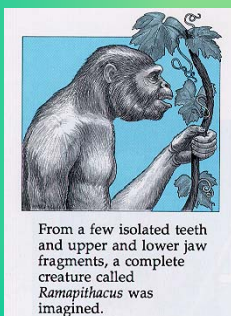
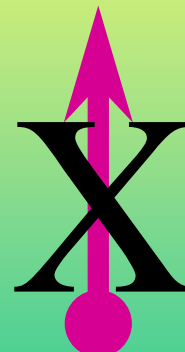
# Fiction

## Homo-erectus



# Apes

## Australopithecus

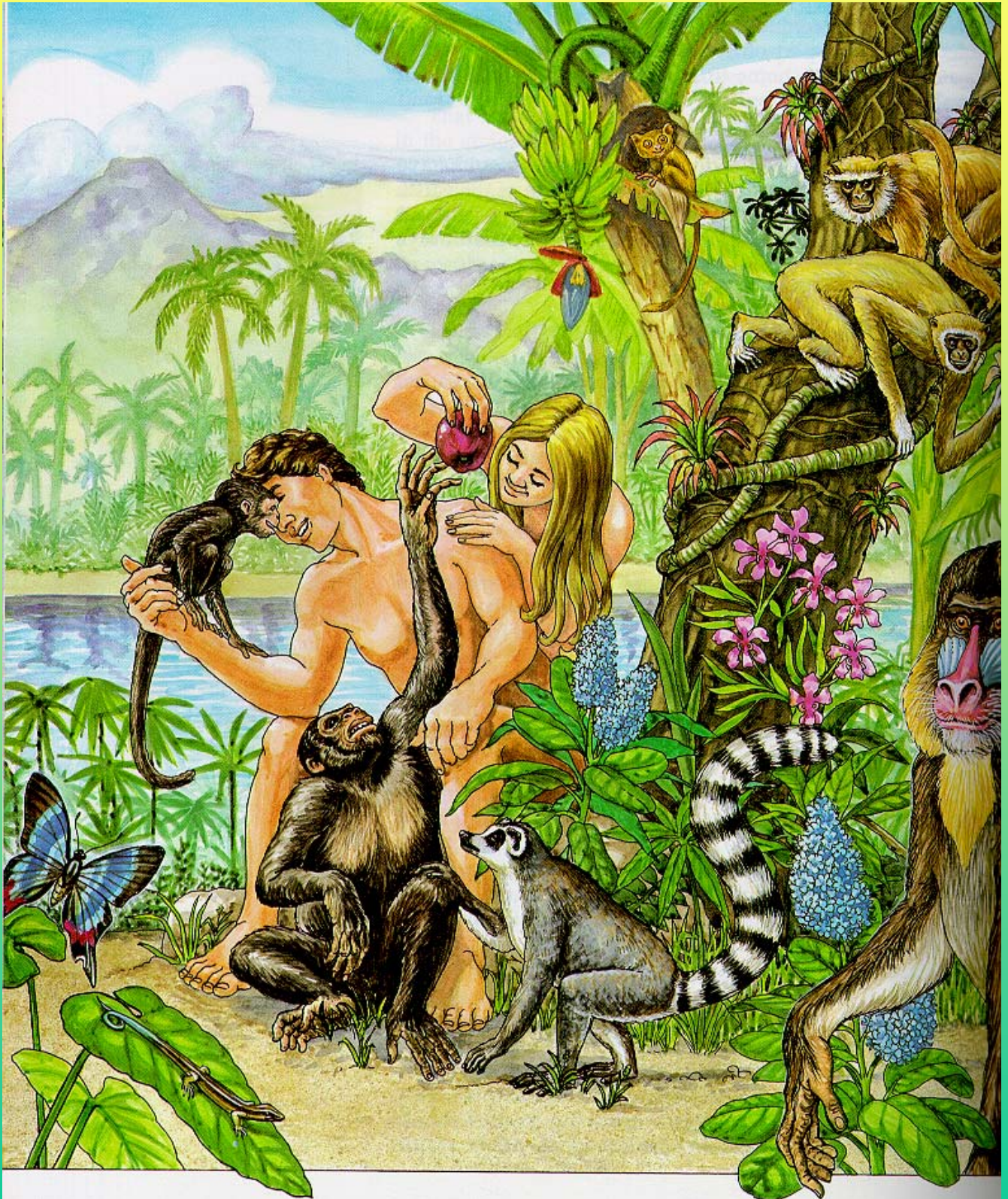


# Apes

## Ramapithecus



# “Male and Female Created He Them” Gen. 1:27





# **Why is Man Different?**

- **Made in the image of God personally and purposefully. Gen. 1:26, Gen. 2:7**
- **God breathed life into man. Gen 2:7**
- **Man is close to God. Ps. 8:5**
- **Man can relate to God. 1 John 1:3**
- **Man has dominion over creation. Gen. 1:26, Gen. 2:15**
- **Man can choose to separate from, or disobey God. Gen. 2:16-17**
- **Man brought death into the world. Rom. 5:12**

# **Bottom Line**

- **You are not an animal so you have no right to act like one.**
- **Scripture and evolution are mutually exclusive.**
- **There is no evidence that man evolved.**
- **Therefore, you can trust the Bible as TRUTH.**